

Quick Installation Guide R4 Wifi Adapter

Dual Antenna for fastest and stable internet signal

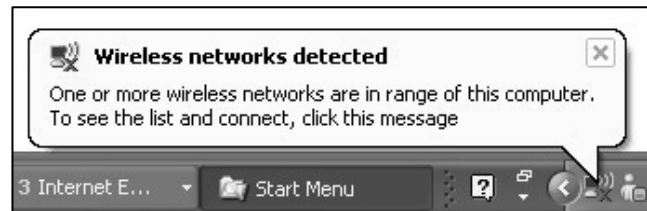


HARDWARE INSTALLATION

1. Connect R4 to your computer USB port. **(do not connect to USB hub)**
2. "Found New Hardware Wizard will be displayed"
INSERT THE R4 DRIVER CD in your CD ROM.
3. **Select NO, not this time** (can windows connect to windows update to search for software?)
4. **Select Install the software automatically (recommended)** (what do you want the wizard to do?)
5. **Click CONTINUE ANYWAY** when screen displayed "did not passed Window Logo testing).

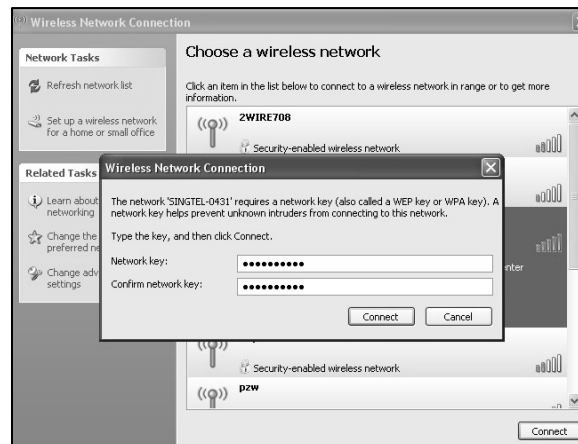
6. **CLICK FINISH** when completing the Found New Hardware Wizard"

7. **Click the wireless network icon** on the bottom right hand corner of your monitor to display the available wireless network.



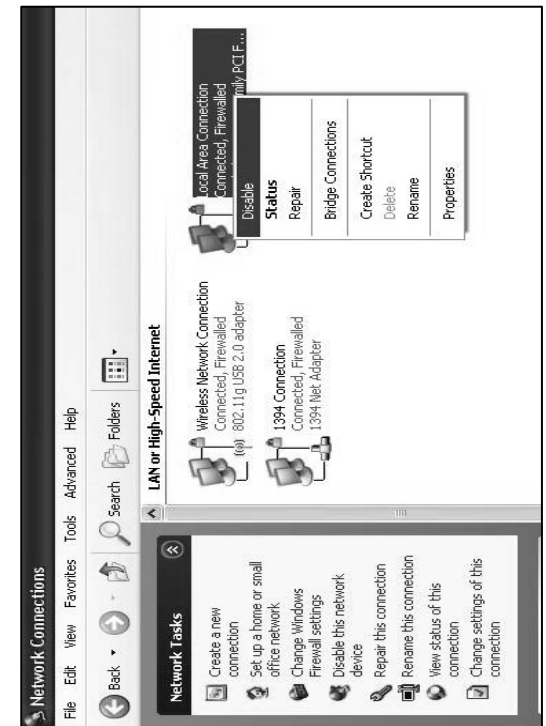
8. Select your wireless network from the list and **CLICK CONNECT**.

9. **Enter your NETWORK key/WEP** which can be found on your modem



10. go to your browser and visit some sites, you will enjoy the speed.

11. you may have 2 networks running, try to disable the other network. Go to windows control panel and click your network connection. Right click the network to disable.



more interesting product visit:
www.tigerproduct.com